

Mar Thoma Residential School-Tiruvalla

First Terminal Examination 2017-18

Class:VI

Biology

Time:1 1/2 hrs.

Marks: 80

I Name the following

(5)

1. Tiny structures that help non-flowering plants to reproduce.
2. The system of naming an organism.
3. The branch of biology that deals with the systematic classification of living things.
4. Two organisms whose body is formed of just one cell.

II Fill in the blanks

(5)

1. Heterotrophs areplants
2. Plants which live in water are called
3.plants yield fibres which are used to weave linen clothes
4. Quinine is obtained from the bark ofplant
5. The removal of waste from the body is known as

III Write true or false. If it is false correct the statement either changing first or last word

(10)

1. Saprophyte derives nutrition from other living organisms.
2. Cereals are good source of proteins.
3. Rubber is obtained from keekar plants.
4. The green pigment present in the plants is called chlorophyll.
5. Herbs are medium sized plants.

IV Give any one point of difference between the following

(10)

1. Saprophytes and parasites
2. Annuals and perennials

3. Cryptogams and phanerogams
4. Mesophytes and xerophytes
5. Monocotyledons and dicotyledons

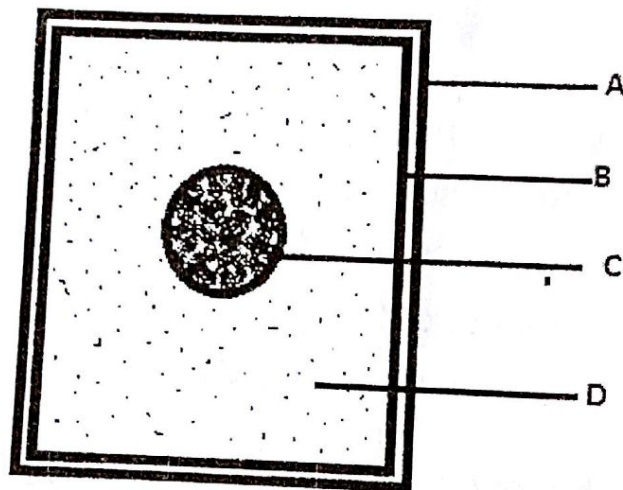
V Give reason

(10)

1. Bryophytes are also called 'amphibians of the plant kingdom'.
2. Locomotion plays an important role in animals.
3. Systematic classification of organisms is necessary.
4. Gymnosperms have needle like leaves.
5. Wheat is an annual plant.

VI Given below is the structure of a cell.

(10)

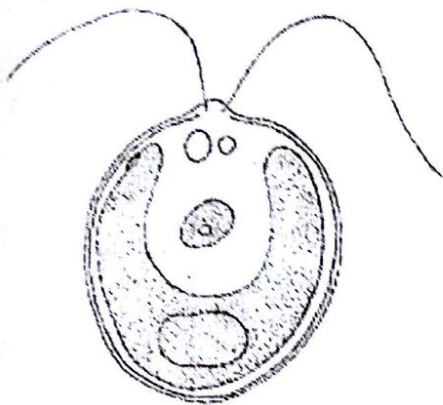


1. Is this a plant or animal cell. Give reason.
2. Label the parts A,B,C and D
3. Some life functions are given below. List these functions into groups as only plants, only animals, both plants and animals.
 - a. Made up of cells
 - b. Produce own food
 - c. Respiration
 - d. Excretion
 - e. Increase in size
 - f. Lay eggs

only plants	only animals	both plants and animals

VII Given below is a picture of an organism

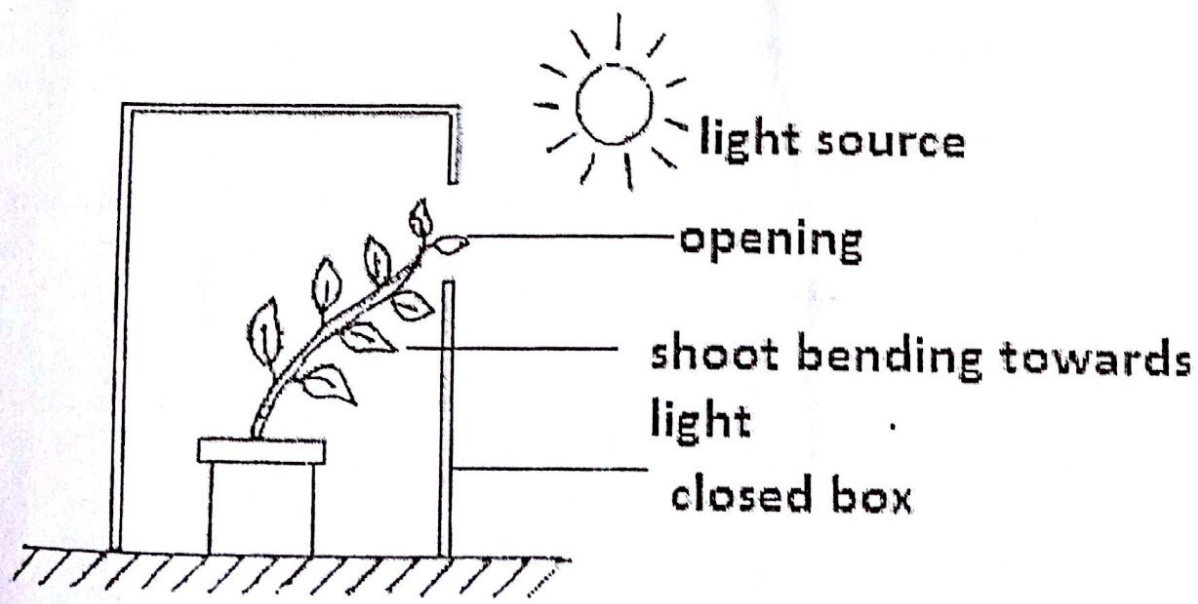
(5)



1. Identify the organism
2. Name the group to which it belongs.
3. Write three characteristic features of the group.

VIII Given below is an experimental set up. Study it carefully and answer the following questions

(6)



1. Define stimulus and response
2. What is the stimulus in this experiment?
3. What is the response?
4. Give another example for stimulus and response.

X Answer the following questions

1. Name the parts of the plant that we eat as vegetables. Give two examples for each. (3)
2. Write four characteristic features of angiosperms. (4)
3. What are cones? (1)
4. Write four differences between plants and animals (4)
5. Name two spices. Why do we add spices to food? (2)
6. Write two features of pteridophytes. (2)
7. Draw a labelled diagram showing a moss plant. (3)