

Mar Thoma Residential School-Tiruvalla

Annual Examination-March 2018

Class: VI

Biology

Time: 1 ½ hrs.

Marks: 80

I. Fill in the blanks

(6)

1. Cutting down of trees in large number is called.....
2. An undifferentiated plant body is called.....
3. Addingtablets in storage tank kills micro organisms.
4.are plants which grow in average condition of climate.
5. All living organism make up thecomponents of the environment.
6.is the male part of a flower.

II Write true or false. If it is false rewrite the sentence either changing first or last word. (6)

1. The outer solid layer of earth is called the atmosphere.
2. Cones are present in angiosperms.
3. The ovary enlarges and forms the seed.
4. Calcium and potassium are required for smooth functioning of nervous system.
5. Excess of fats in the diet can cause malnutrition.
6. The green flat part of leaf is called midrib.

III Define the following terms

(5)

1. Perennials
2. Pollutants
3. Bio concentration
4. Vector
5. Hermaphrodite flower

IV Write a significant difference between:

(5)

1. Renewable and non-renewable resources
2. Monocotyledon and dicotyledon
3. Saprophytes and parasites
4. Petiole and pedicel
5. Reticular and parallel venation

(5)

V. Give reason

1. Carbon monoxide is a poisonous gas.
2. Light is an important factor for plants and animals.
3. Sugarcane plants have stilt roots.
4. We should wash our hands before eating.
5. Gymnosperms are known as naked seeded plants.

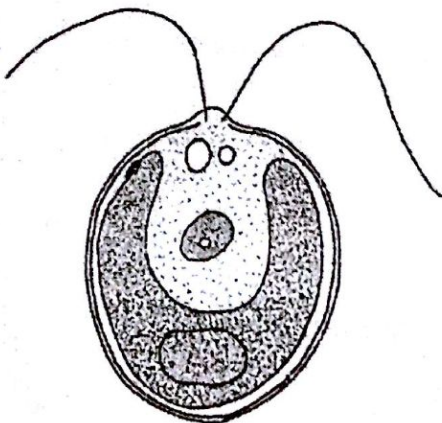
VI. Four terms are given, out of which three belong to one category. One is odd. Choose the odd one and write the category of others.

(5)

Terms	Odd one	category
1. Bacteria, Mosquitoes, Virus, Protozoa		
2. Anther, Stigma, Style, Ovary		
3. Minerals, Forest, Petroleum, Coal		
4. Cotyledon, Plumule, Endocarp, Radicle		
5. Fats, Proteins, Minerals, Plaque		

VII A picture is given below

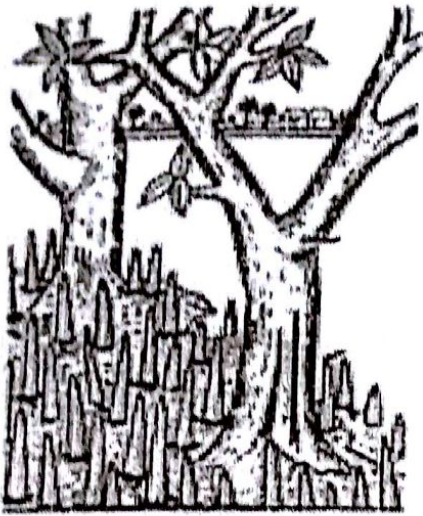
(4)



- a) Identify the given organism
- b) Write the group in which it belongs to
- c) Write two characteristic features of this organism

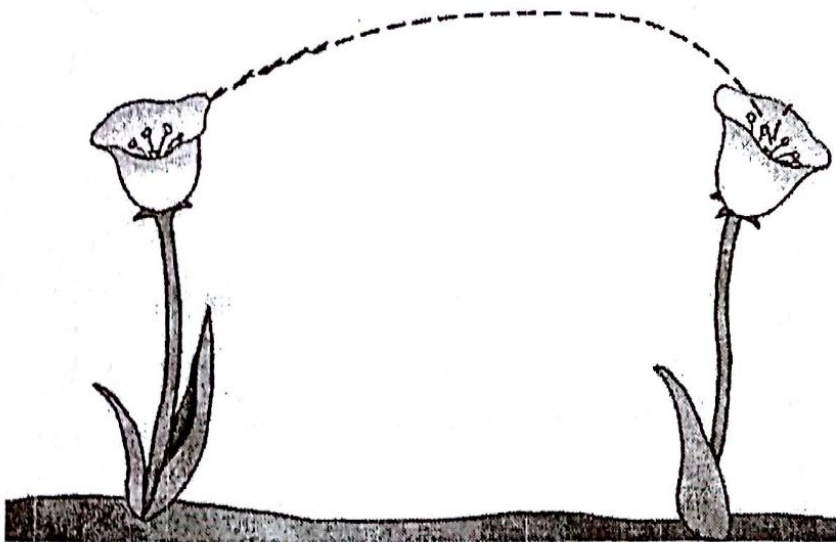
VIII The picture given below shows special type of roots

(4)



- a) Identify the type of roots given above
- b) Write two features of this type of roots
- c) Why some plants have these type of roots?

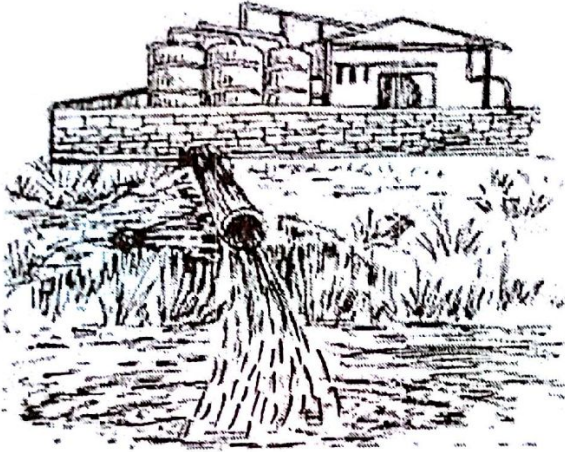
IX The picture given below shows a type of pollination



- a) Which type of pollination is being shown?
- b) Name the three pollinating agents.
- c) Why do some flowers produce nectar?
- d) What is the advantage of pollination?

(4)

X A picture is given below



- a) Identify the kind of pollution shown above
- b) Name the source of pollution shown here
- c) Mention one ill effect of this pollution on health
- d) Suggest one method to prevent it

XI Answer the following questions

1. Why should we eat green leafy vegetables? (1)
2. Write a significant difference between consumers and decomposers (1)
3. How is acid rain formed? (2)
4. List four ways to preserve forests (4)
5. What would happen if there are no decomposers? (2)
6. List four rules to prevent infection (4)
7. Give an example for protozoan disease (1/2)
8. Write three features of Angiosperms (3)
9. Write four ways to conserve resources (4)
10. i. Draw a labelled diagram showing diagrammatic representation of photosynthesis (5)
ii. Why are plants called producers?
11. i. Draw a labelled diagram showing parts of a flowering plant (5 1/2)
ii. Write two functions of underground part of the plant