

MARATHOMA RESIDENTIAL SCHOOL
FIRST TERMINAL EXAMINATION 2017-2018
BIOLOGY

STD: VII

Time: 1½Hrs
Marks: 80

SECTION I (40 marks)

Question I

a. Name the following.

(10)

1. The rod like structure seen in centrosome.
2. The unit to measure the size of the cell.
3. The finger like infolding found in the inner walls of a mitochondrion.
4. The smallest cells in human body.
5. The non-living parts of a cell.
6. The dye used to stain animal cell.
7. The golgi bodies of plant cell.
8. The organ system helps in breaking down of complex food into simpler form.
9. The tissue that lines the windpipe.
10. The part of the cell which control it.

(4)

b. Define the following.

1. Tissue
2. Cell organelle
3. Cell
4. Semi permeable membrane.

c. Give any one point of difference between the following.

(10)

1. Voluntary muscles and involuntary muscles.
2. RBC & WBC.
3. Tendon and ligament.
4. Cell wall and cell membrane
5. Permanent tissue and meristematic tissue.

d. Write the functions of the following.

(6)

1. Lymph.
2. Lysosomes.
3. Ribosome
4. Chloroplast.
5. Adipose tissue.
6. Vacuoles

e. Find the odd one and give reason.

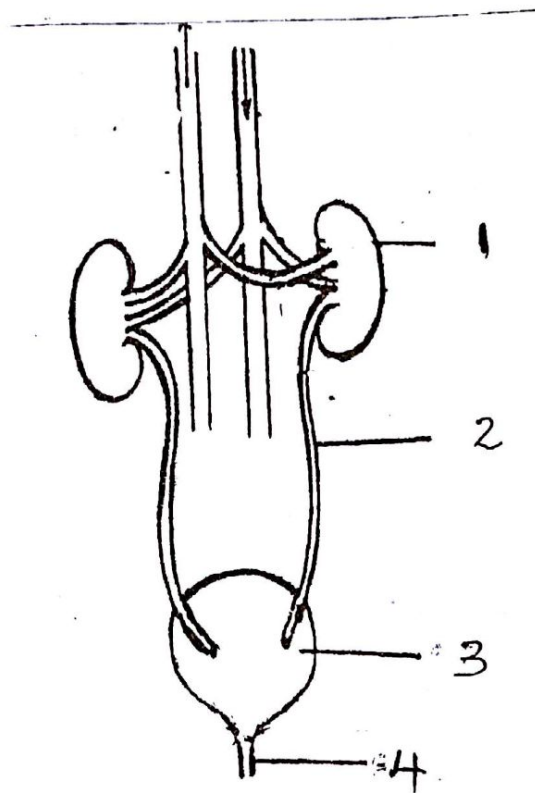
(10)

1. Stomach, oesophagus, heart, large intestine.
2. Trachea, lungs, nose, ovaries.
3. Xylem, collenchymas, parenchyma, sclerenchyma.
4. Tissue, organ system, cell, biome.
5. Tendon, cartilage, nerves, blood.

SECTION 2 (40 marks)

Question 2

a. The diagram given below shows an organ system. Study the same and answer the questions that follow.



(5)

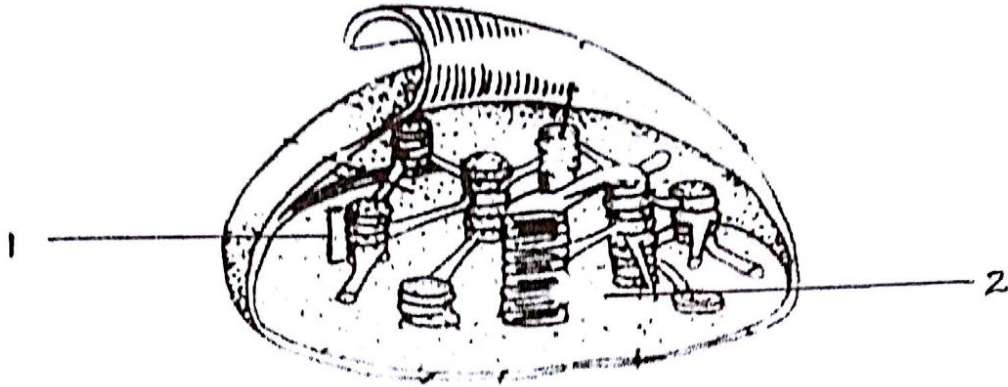
1. Identify the organ system.
2. Label the parts numbered 1-4.
3. Write the function of the above shown organ system.
4. Name any other organ system.

b. Write the exact location of the following.

1. Cambium.
2. Cuboidal epithelium.
3. Cardiac muscles.
4. Columnar epithelium.
5. Collenchyma.

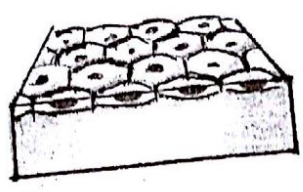
Question 3

- a. Given below is the diagram of certain cell organelle. Study the same and answer the questions that follow. (5)



1. Identify the above shown organelle.
2. Label the parts 1-2.
3. Mention the function of the organelle shown above.
4. Which type of cells these organelles are found.
5. Name the cell organelle that is concerned with cellular respiration.

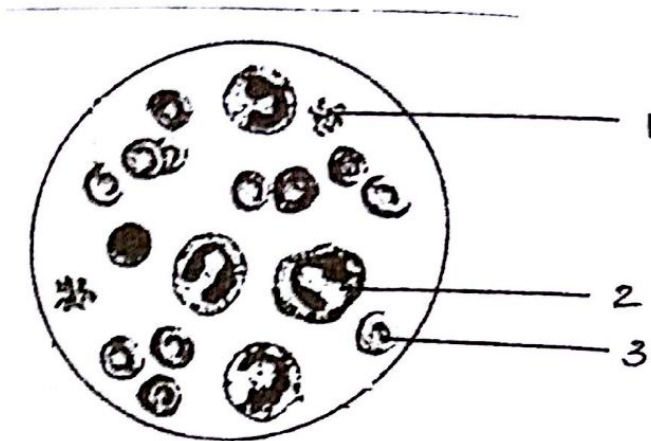
- b. A kind of epithelial tissue is shown below. Observe the same and answer the questions that follow. (5)



1. Name the kind of epithelial tissue.
2. Give the exact location of the tissue in the body.
3. What is the function of this tissue?
4. Name any other kind of epithelial tissue and point out how it differs from the tissue shown above.

Question 4

- b. Given below is a certain tissue. Study the same and answer the questions that follow. (5)



1. Identify the tissue.
2. Label the parts numbered 1-3.
3. Mention the function of each part labelled.

b.

1. Draw a neat and labelled diagram of neuron.
2. Write the function of a neuron.
3. Name the organ system in which neuron belongs.

Question 5

a. Answer the following

1. Cardiac muscles are involuntary muscles. Why?
2. One must eat calcium rich food for healthy bones. Why?
3. List any four characteristics of meristematic tissue.
4. Animal cells do not have plastids. Why?
5. How does a cell divide?