

**MARTHOMA RESIDENTIAL SCHOOL, THIRUVALLA**  
**FIRST TERMINAL EXAMINATION 2017-2018**  
**BIOLOGY**

STD: VIII

Time: 2Hrs  
Marks: 80

**SECTION I (40 marks)**

*Question I*

a. Name the following.

(10)

1. The most common method of reproduction in Amoeba.
2. The reproductive cells in females.
3. The structure which produces sperm in males.
4. The part of the flower in which pollen is produced.
5. The female part of a flower.
6. A flower which bears both male and the female parts.
7. The plant receiving the bud or the shoot in grafting.
8. The cell mass produced during micro propagation.
9. The part of the flower from which fruit develops.
10. An aquatic plant that is pollinated by insects.

b. Define the following.

(5)

1. Dispersal
2. Gestation
3. Puberty
4. Implantation
5. Osmosis

c. Give any one point of difference between the following.

(10)

1. Self pollination and cross pollination
2. Xylem and phloem.
3. Characteristics of wind pollinated flower and water pollinated flower.
4. Micro nutrients and macro nutrients.
5. Ovary and testis.

d. Given in the box below are a set of 14 terms. Of these 12 can be paired into 6 matching pairs, one has been done for you as an example

(5)

Example: Bryophyllum- leaf

Identify the remaining five matching pairs.

Star fish, vallisneria, palm, bryophyllum, fern, multiple fission, maize, water pollination, regeneration, wind pollination, leaf, spore, chlorella, dry fruit
--

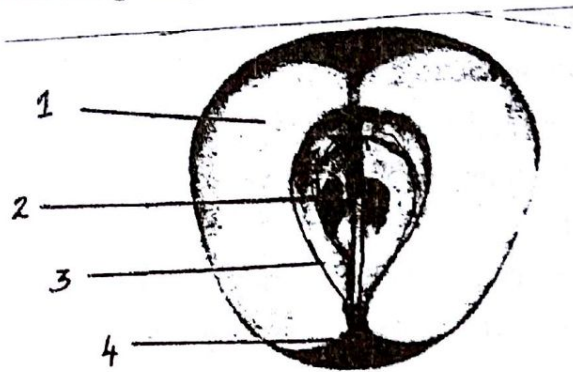
e. Answer the following.

1. Write down any three characteristics of a flower pollinated by insect.
2. Mention any three factors affect transpiration.
3. Write down any four methods of artificial vegetative reproduction.

### SECTION 2 (40 marks)

#### Question 2

a. Study the following diagram and answer the questions that follow. (5)



1. Name the fruit.
2. What type of fruit is this?
3. Label the parts 1-4.
4. Which is the edible part of the fruit?

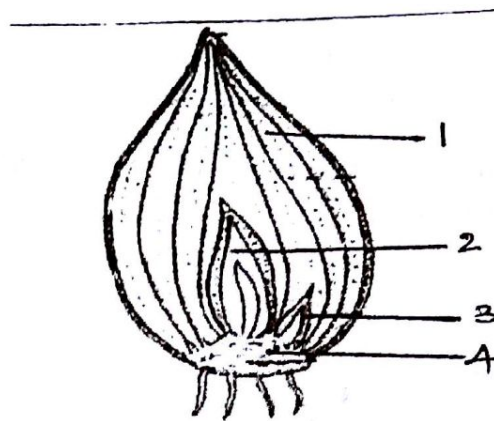
b. An apparatus shown below was set up in sunlight for about an hour. It was observed that drops of water appeared inside the polythene bag. Answer the questions that follow. (5)



1. Which phenomenon being demonstrated?
2. Define the phenomenon.
3. Why the pot and its soil were left uncovered by the polythene bag.
4. Mention two ways in which this process is beneficial to plants.

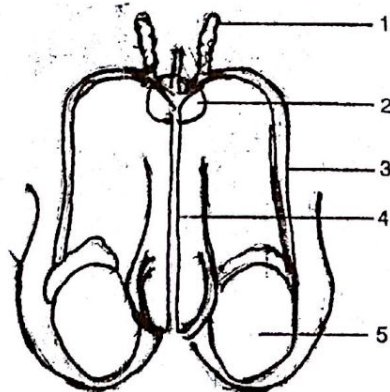
### Question 3

- a. Given below is a diagram. Study the same and answer the questions that follow. (5)



1. Identify the diagram as a whole.
2. Label the parts 1-4.
3. Which type of reproduction takes place in this plant?
4. Name any one plant <sup>that</sup> reproduces from root.

- b. Given below is the outline of the male reproductive system. Study the diagram and answer the questions that follow. (5)



1. Name the parts labelled 1-5.
2. State the functions of parts labelled 1, 2 and 5.
3. What is semen?

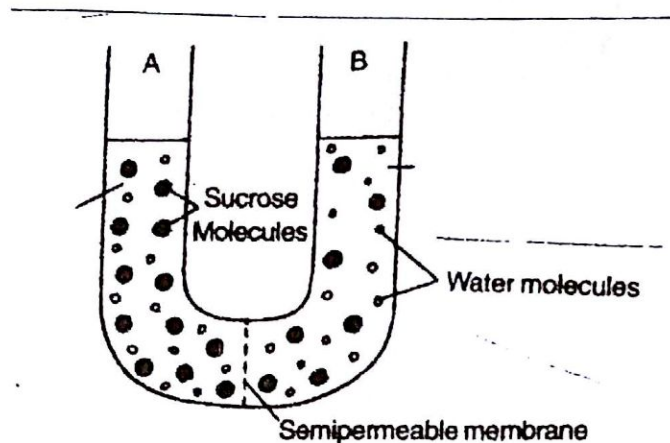


#### Question 4

a.

1. With a neat labelled diagram explain the difference between human sperm & egg. (5)
2. Name the part where fertilisation takes place in human beings.
3. Mention the gestation period of human embryo.

b Given diagram is of an experiment just at the start .Study the same and then answer the questions that follow: - (5)



1. What process is intended to be shown by the experiment?
2. Define the process.
3. Which side of the U tube contain more concentrated solution, A or B?
4. Why is the membrane separating the two solutions labelled as semi permeable membrane?

#### Question 5

a. Give reason for the following. (6)

1. A large number of sperms are present in semen.
2. Testes lie outside the abdominal cavity of scrotal sacs.
3. The rate of transpiration is faster during day time.

b. Write short note on: (4)

1. Bryophyllum
2. Micro propagation