

19

**MARTHOMA RESIDENTIAL SCHOOL, THIRUVALLA**  
**ANNUAL EXAMINATION 2018-2019**  
**BIOLOGY**

**STD: VI**

**Time: 2Hrs**  
**Marks: 80**

**SECTION I (40 marks)**

**Question I**

- a. Name the following. (5)
1. The instrument used to detect blood pressure.
  2. An example of a degenerative disease.
  3. A plant which has needle shaped leaves.
  4. A bird which helps in pollination.
  5. The solution filled inside the vacuole.
- b. Define the following. (5)
1. Habitat.
  2. Cell.
  3. fertilisation.
  4. Adaptation.
  5. Health.
- c. Give any one point of difference between the following. (5)
1. Selectively permeable membrane and freely permeable membrane.
  2. Self pollination and cross pollination.
  3. Plant cell and animal cell.
  4. Chromoplast and Chloroplast.
  5. Leucocytes and Platelets.
- d. Write the functions of the following. (5)
1. Gene.
  2. RBC.
  3. Operculum.
  4. Air bladder.
  5. Wing muscles.
- e. Choose the odd one out from the following terms given and name the category to which the others belong. (5)
1. Cholera, Smallpox, Tetanus, Typhoid.
  2. Anther, ovary, stigma, style.
  3. Maize, Palm, Pine, Marigold.
  4. RBC, Bacteria, Platelets, WBC.
  5. Vallisneria, Water lily, Cedar, Lotus.

f. Match the following.

- |                       |                    |
|-----------------------|--------------------|
| 1. Plant cell         | small vacuole      |
| 2. Insect pollination | large vacuole      |
| 3. Seed               | deoxygenated blood |
| 4. Veins              | trapa              |
| 5. Animal cell        | warmth             |
|                       | oxygenated blood   |

g. Give the exact location of the following.

1. Nucleolus.
2. Pollen grain.
3. Atrio-ventricular valves
4. Gills
5. Heart

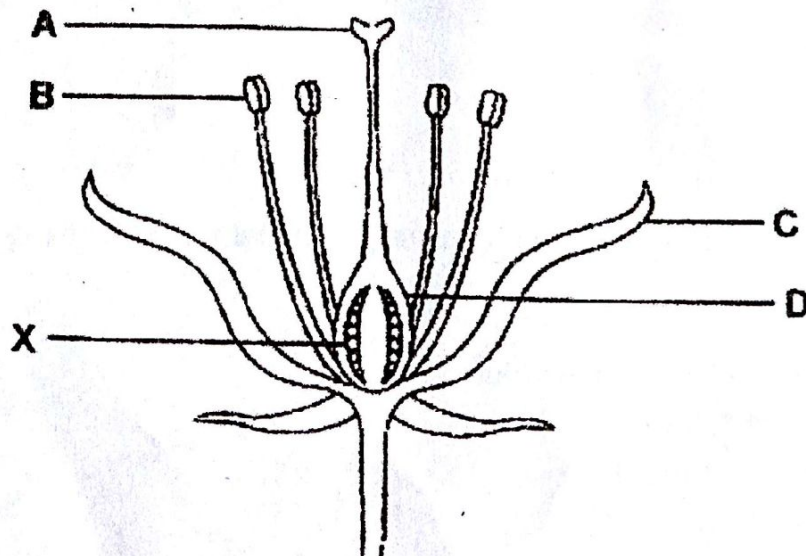
h. Rewrite the correct statement by changing the word underlined.

1. Mitochondrion is the cell organelle found only in plant cell.
2. Valve divides the heart into right and left side.
3. Bean seed is a monocotyledonous seed.
4. Petals are the part of a flower which protects the growing bud.
5. Walnut is a fleshy fruit.

## SECTION 2 (40 marks)

### Question 2

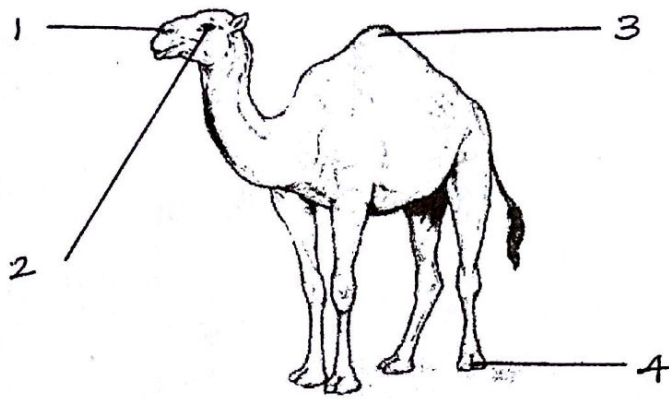
a. The diagram given below shows the parts of a flower. Observe the same and answer the questions that follow.



1. Label the parts numbered A-D.
2. Which is the landing place for pollen grain?
3. What will happen to X after fertilisation?
4. Name the type of flower which possesses male and female reproductive part.



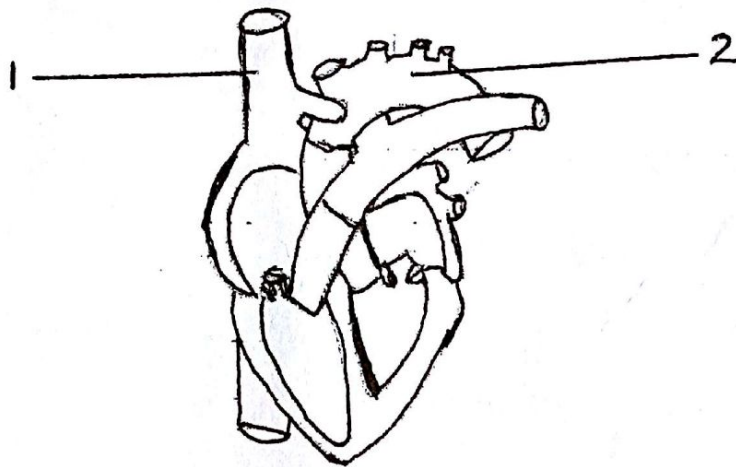
b. Given below is the picture of a camel. Observe it and write the answers for the questions that follow (5)



1. Name the habitat where we can find this animal.
2. Name a plant found in this habitat. Write any one adaptation of the plant.
3. Write the adaptations of the part labelled 1-4.
4. List any two environmental factors that influence a habitat.
5. Name any one type of terrestrial habitat with low temperature.

### Question 3

a. Given below is the diagram of human heart. Study the same and answer the questions that follow. (5)



1. Label the parts 1-2.
2. Which are the two types of blood circuits seen in human body?
3. Which are the four chambers of heart?
4. Write any two ways to keep your heart healthy.

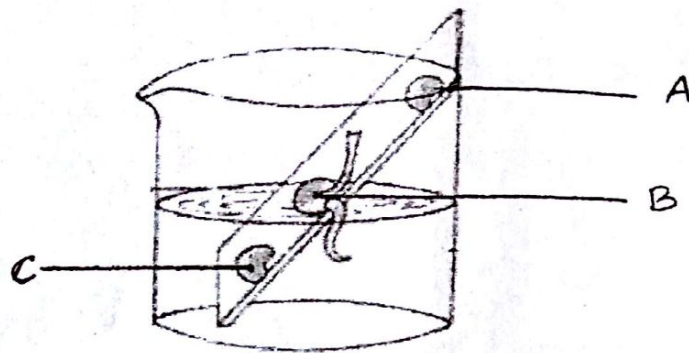
b.

(5)

1. Draw a well labelled diagram of a fish.
2. What name is given to a body which is pointed at both ends? How is this body shape useful to them for their survival in water?
3. Name any organism found in aerial habitat which has the same type of body shape
4. Name any two adaptations of a fish to survive in water.
5. Name any two plants that grow in aquatic habitat.

### Question 4

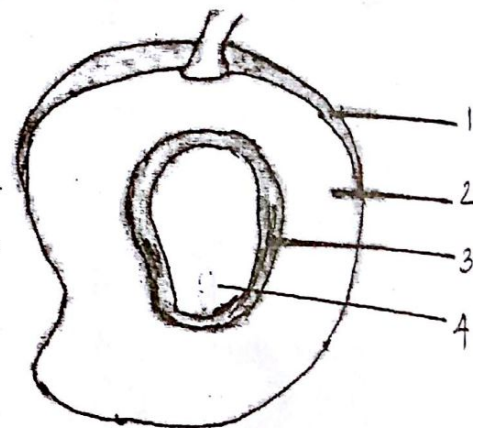
a Given below is an experiment. Study the same and answer the questions that follow.



1. Mention the respective condition or conditions each seed gets (A, B and C).
2. Name and define the phenomenon under study.
3. Which seed among this shows growth? Why?

b. Given below is a fruit. Study the diagram and answer the questions that follow.

1. Define fruit.
2. Label the parts 1-4
3. Which are the two types of fruits?
4. Write any two functions of fruits?



### Question 5

a. Give reason for the following.

1. RBCs are more in the blood of a mountain animal.
2. The walls of the capillaries are very thin.
3. Regular exercise is a must.
4. Garbage should be kept in covered bins.
5. The leaf stalk of water plants are filled with air spaces.

b. Answer the following

1. Draw a well labelled diagram of a seed.
2. Name the part of the seed which provides food to the growing embryo.
3. Name the part from where the following arises.
  - a Root
  - b shoot