

MAR THOMA RESIDENTIAL SCHOOL THIRUVALLA

SECOND TERM EXAMINATION 2019-20

STD: 1 _____ ENVIRONMENTAL SCIENCE

Marks: 50

Name: _____ Roll No: _____

I. Name the following.

(10)

a. Two plants that live in water.

Ans: _____, _____

b. Two wild animals.

Ans: _____, _____

c. Two fruits that have many seeds.

Ans: _____, _____

d. An animal that can live both in water and on land.

Ans: _____

e. The main source of water.

Ans: _____

f. The biggest animal on earth.

Ans: _____

g. The person who mends our shoes.

Ans: _____

II. Fill in the blanks.

(10)

1. _____ clothes keep us cool.

2. Moving air is called _____.

3. Some animals live in _____.
4. Most leaves are _____ in colour.
5. A _____ grows food for us .
6. A _____ works in a school.
7. Food gives us _____.
8. We wear _____ clothes in summer.
9. _____ clean our air.
10. _____ air can make us ill.

III. Use these words to fill.

(5)

{ butterfly , tiger, fish, dog, monkey }

- a. A _____ lives in the forest.
- b. A _____ is a pet animal.
- c. A _____ has wings.
- d. A _____ lives on trees.
- e. A _____ dies when it is taken out of water.

IV. Write true or false.

(5)

- a. Chocolate keeps our teeth strong. _____
- b. We get butter from milk. _____
- c. We wear uniforms in the house. _____
- d. Birds are animals that can fly. _____
- e. Plants make our air dirty. _____

V. Underline the correct word.

(2)

1. A postman / fireman works in a post office.
2. We get tea from plants / animals.
3. Some people wear rain coats / uniforms to work.
4. Rice / dal is a cereal.
5. Hens give us milk / eggs.

VI. Choose the correct word from the bracket and fill in the blanks. (5)

- a. We wear _____ (woollen , silk) clothes in winter.
- b. We eat _____ (lunch , breakfast) in the morning.
- c. Birds fly with the help of their _____ (wings, legs).
- d. The baby plant is present in the _____ (stem, seed).
- e. A _____ (doctor, carpenter) makes furniture.

VII. Answer the following question.

(10)

1. What are pet animals ?

Ans: _____

2. Why do we need air?

Ans: _____

3. What makes the air dirty?

Ans: _____

4. How do clothes protect us?

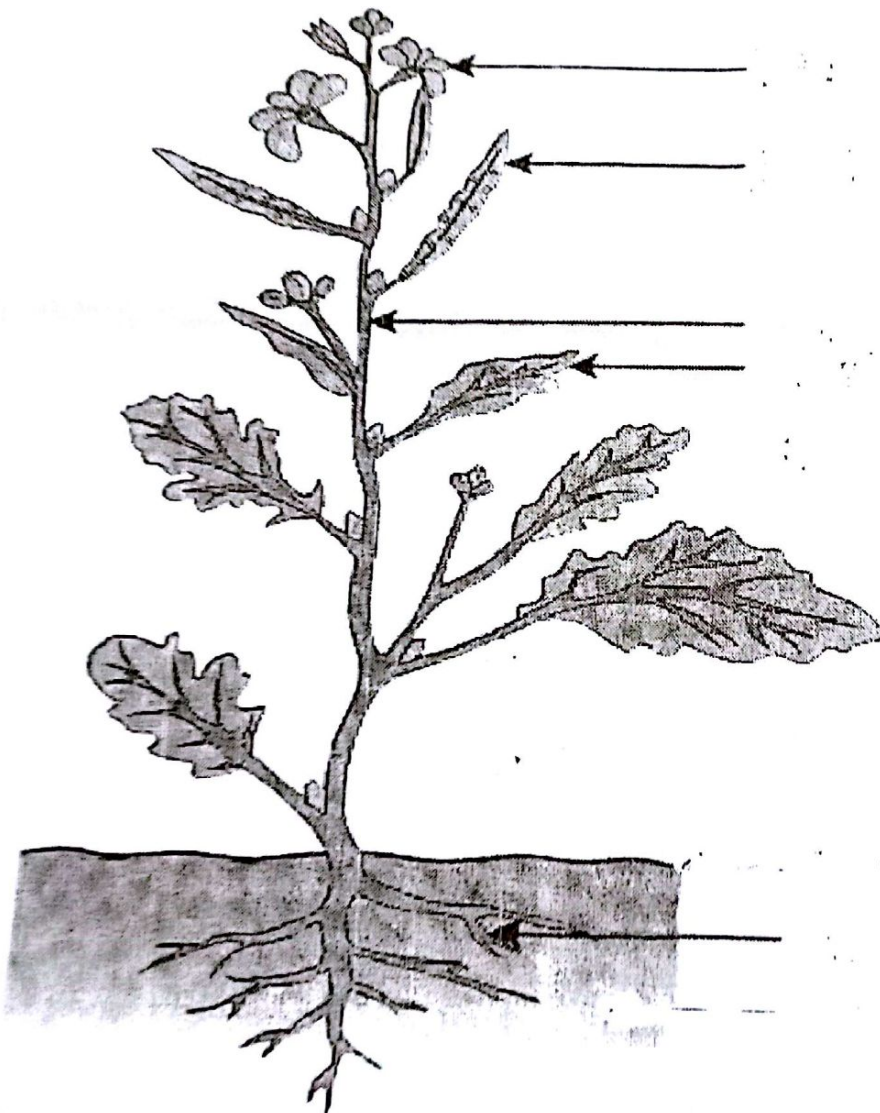
Ans: _____

5. Why do we wear clothes?

Ans: _____

VIII. Label the parts.

(2)



Parts of a plant