

Class VIII

SECTION I (40 MARKS)

Question 1

(A) Name the following

1. The only artery which carries deoxygenated blood [5]
2. The hormone secreted by islets of Langerhans.
3. Mutually beneficial association of two organisms.
4. Plants naturally occurring in a particular area.
5. The valve present between the left atrium and the left ventricle.

(B) Define the following terms

1. Ecosystem [5]
2. Detritivores
3. Hormone
4. Pericardium
5. Autotrophs

(C) State one function of each of the following

1. Semi-lunar valves [5]
2. Lymph
3. Scavengers
4. Prolactin
5. Blood

(D) Give reason

1. Adrenaline is called the "fight or flight hormone". [5]
2. It is necessary to know the blood groups of the donor as well as the recipient.
3. Pituitary gland is called the "master gland".
4. Soil is the foremost component of the forest.
5. The existence of plant life is integral to the continuity and development of ecosystem

(E) Differentiate between the following pairs on the basis of what is given in brackets [5]

1. Coronary artery and Coronary vein [Function]
2. Parasitism and Predation [Example]
3. Primary consumers and Tertiary consumers [Definition]
4. Simple goitre and Myxoedema [Symptoms]
5. Exocrine gland and Endocrine gland [Definition]

(F) State the exact location of the following structure

1. Heart
2. Adrenal
3. Pituitary
4. Sinoatrial node
5. Pancreas

(G) Choose the correct answer from the four options given below

1. The term "ecosystem" is derived from the Greek word "Oikos" meaning
 - [i] Body weight
 - [ii] Food
 - [iii] House
 - [iv] Size
2. Cortisone hormone is secreted by:
 - [i] Insulin
 - [ii] Adrenaline
 - [iii] Glucagon
 - [iv] Thyroxine
3. Pulmonary veins carries:
 - [i] Oxygenated blood
 - [ii] Deoxygenated blood
 - [iii] Glucose-deficient blood
 - [iv] CO₂ laden blood
4. In which organ of our body does the blood get oxygenated?
 - [i] Stomach
 - [ii] Lungs
 - [iii] Liver
 - [iv] Heart
5. The number of steps in a food chain can never be more than
 - [i] Four
 - [ii] Five
 - [iii] Six
 - [iv] Seven

(H) Fill in the blanks with suitable words

1. The two lower chambers of heart are called.....
2. The..... is a large vein that brings in deoxygenated blood from the upper parts of the body.
3.stimulates the breakdown of glycogen in the liver to glucose.
4. Rat in any food chain would occupy the position of
5.are the finest blood vessels in the body interconnecting the arteries and veins.

SECTION II (40 MARKS)

Question 2

The diagram given below is an endocrine gland.

[5]

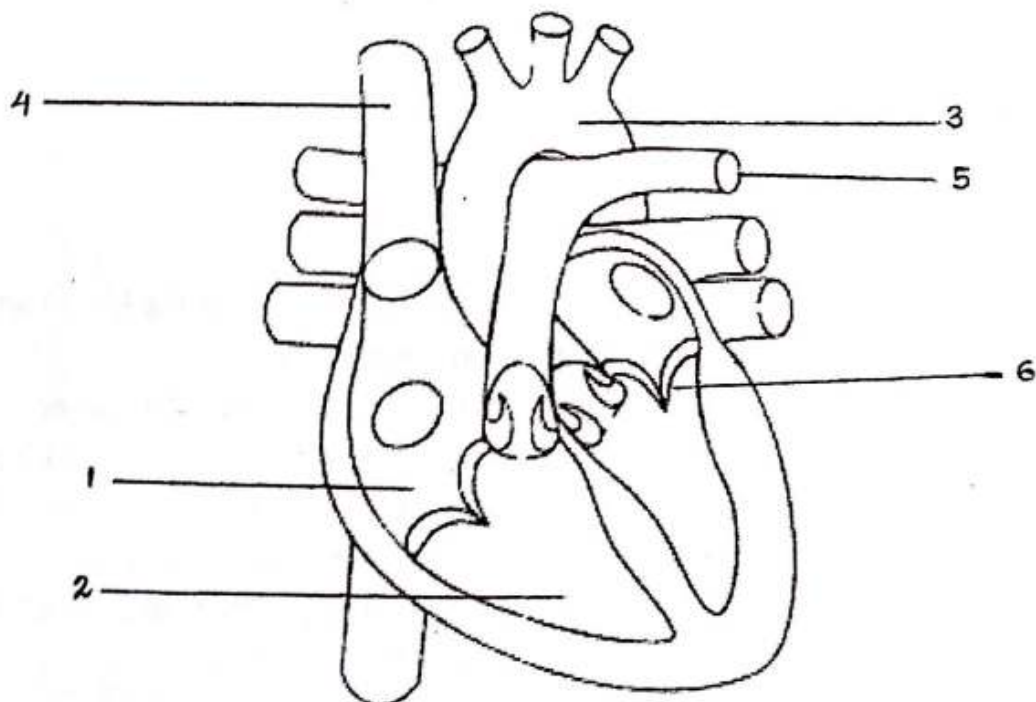


- (i) Identify the gland
- (ii) Write its location
- (iii) Name the hormone produced and its function
- (iv) What will happen due to the over secretion of this hormone?

Question 3

[6]

The diagram given below represent the human heart. Study the same and answer the questions that follow



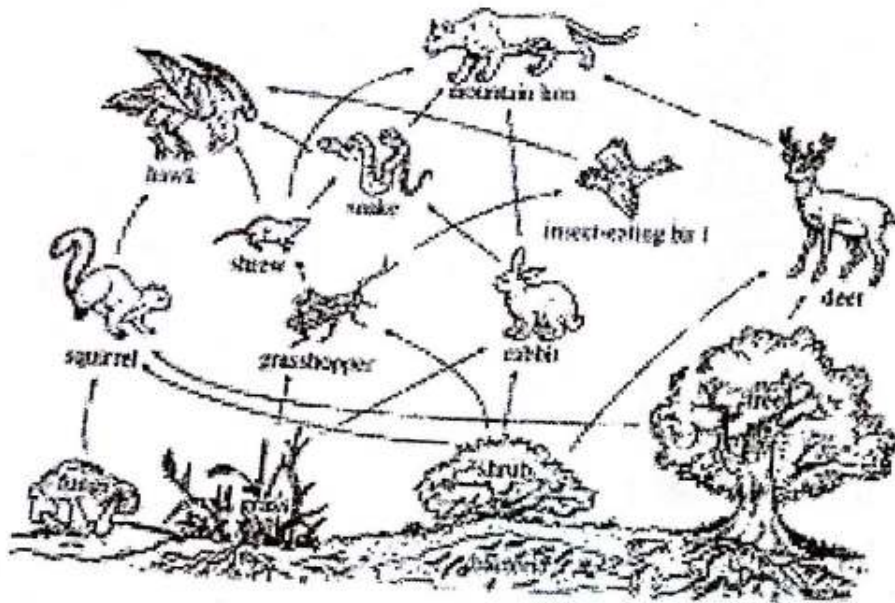
(ii) Which chamber of the heart receives deoxygenated blood from the body?

(iii) Explain double circulation

Question 4

Given below is a food web. Study the same and answer the questions that follow

Food Web



1. Write four food chain from this food web
2. Differentiate between food chain and food web
3. Write a note on

(i) Tropical rain forest

(ii) Coniferous forest

Question 5

Answer the following questions

1. Write three ways in which Insulin lowers glucose from the blood stream.
2. Differentiate between cardiac arrest and heart attack
3. Write any four importance of physical hygiene during adolescence
4. Briefly discuss any four activities which can be practised to overcome stress.
5. You can see some blood vessels on the outside of the hands specially in older people. Are those veins or arteries? How can you confirm your answer?
6. Write four physical changes each in boys and girls that take place during puberty.
7. How does the air influence the ecosystem?

8. During surgical operation or during accidents, the patient may be given blood from outside to save his life. What is the technical name of this process? Briefly explain the precautions to be observed and taken in this process.

Question 6

Explain the following terms:

[4]

1. Palpitation
2. Closed vascular system
3. Tissue fluid
4. Heterotrophs

Question 7

Draw a neat labelled diagram of the following

[4]

1. Artery
2. Vein