

MAR THOMA RESIDENTIAL SCHOOL

STD – XII

FIRST TERM ASSESSMENT

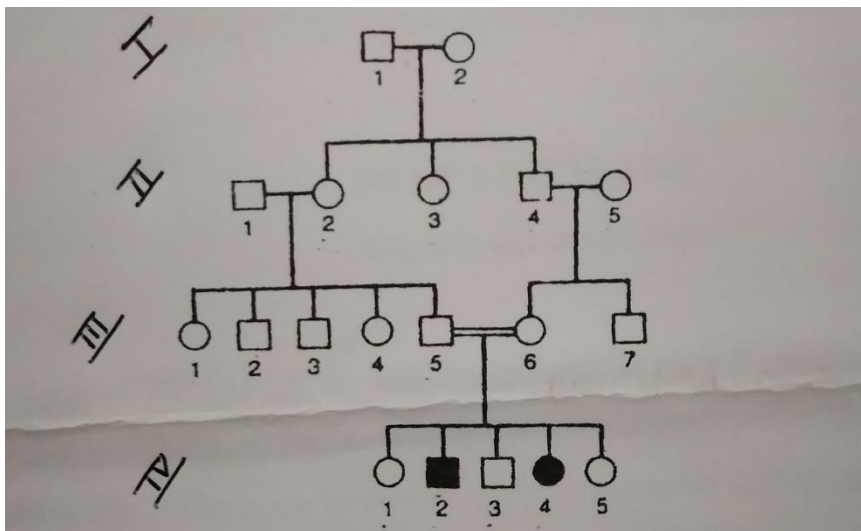
TIME – 30mns

BIOLOGY

Marks - 20

SECTION A – BOTANY

- I. Define: (a) Multiple alleles (b) Polyembryony (c) Biofertilisers [3]
- II. Give brief answers: [2]
1. What would be the genotype of a true breeding tall plant with wrinkled seeds, if tall(T) is dominant over dwarf(t) and round seed(R) is dominant over wrinkled seed(t)?
  2. What are Ramsar sites?
- III. 1.Name the steps in biogas production. [2]
2. Describe the development of Helobial endosperm. [2]
  3. Mention the use of the following: [2]  
(a) Cyclosporin-A (b) Statins
- IV.1. Discuss the events between pollination and fertilization in plants. [3]
2. Explain species area relationship as proposed by Alexander von Humbolt. [3]
  3. Study the given pedigree chart and answer the questions: [3]



- a) Is the trait sex linked or autosomal?
- b) Is the trait dominant or recessive?
- c) Two lines are drawn between 5 and 6 of the third generation. Why?
- d) Give the genotype of the parents of the first generation and 1,2,3,4 of the fourth generation.

\*\*\*\*\*