

STD II

MARKS: 50

TIME : 1 ½ hrs

Name: \_\_\_\_\_ Roll No: \_\_\_\_\_

**(1) Name the following**

10

1. The internal organ help us to breathe \_\_\_\_\_

2. The sense organ used to feel that ice is cold \_\_\_\_\_

3. Two synthetic clothes

a) \_\_\_\_\_ (b) \_\_\_\_\_

4. Two pulses

a) \_\_\_\_\_ (b) \_\_\_\_\_

5. Two animals from which we get wool

a) \_\_\_\_\_ (b) \_\_\_\_\_

6. Two moveable houses

a) \_\_\_\_\_ b) \_\_\_\_\_

**(II) Fill in the blanks**

5

1. Food gives us \_\_\_\_\_ to work and play.

2. We like to wear \_\_\_\_\_ clothes in summer season.

3. Houses in the plains have \_\_\_\_\_ types of roofs.

4. \_\_\_\_\_ is the national dress of Japan.

5. Houses on wheels are called \_\_\_\_\_.

III) What type of food are the following ?

2

- 1. fish - \_\_\_\_\_
- 2. butter - \_\_\_\_\_
- 3. cabbage - \_\_\_\_\_
- 4. pulses - \_\_\_\_\_

IV) Identify the internal organs and write their function

3

1)

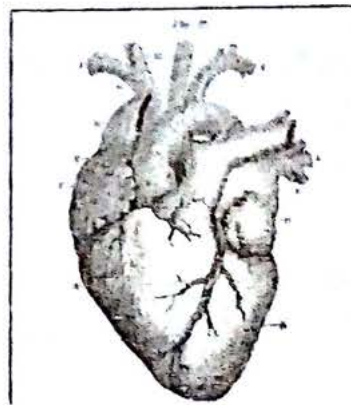


\_\_\_\_\_

\_\_\_\_\_

\_\_\_\_\_

2)



\_\_\_\_\_

\_\_\_\_\_

\_\_\_\_\_

V) Match the following

5

- 1. silk worm - hut
- 2. arms and legs - cities
- 3. kuchcha house - silk
- 4. apartments - uniforms
- 5. nurses - limbs

**VI) Give reason**

4

1. Houses on the hill tops have sloping roofs.

---

---

2. We must eat different kinds of food every day.

---

---

**VII) Write true / false for the following statements**

3

1. There is no need to wash our hands before eating. \_\_\_\_\_

2. Chest and abdomen are part of the trunk region. \_\_\_\_\_

3. Bungalows are large houses with lawns.

---

**VIII) Answer the following**

15

1. Why are protective foods so called?

---

---

2. The brain is one of the most important parts of the body. Why?

---

---

3. Why do we cook food?

---

---

4. List three good eating habits.

1. \_\_\_\_\_
2. \_\_\_\_\_
3. \_\_\_\_\_

5. What are pucca houses? Give an example.

---

---

---

6. What is advantage of using a tent?

---

---

---

IX) Draw a snow house. Name the people who live there.