

MAR THOMA RESIDENTIAL SCHOOL- TIRUVALLA

ANNUAL EXAMINATION -2017 -18

ENVIRONMENTAL STUDIES

Name: _____

STD: II

Roll no: _____

MARKS:50

I. Name the following:

5

1. A large water body _____

2. A crop grown on hillslopes _____

3. A scavenger _____

4. A flat land between two mountains _____

5. A flightless bird which is a good swimmer _____

II. Fill in the blanks

5

1. The Earth is surrounded by a layer of air called the

2. We cannot drink water from the sea because it is _____

3. There are _____ hours in a day.

4. The _____ pumps blood to all parts of our body.

5. When we face the rising sun we are looking towards the _____

III. Circle the odd one out

3

1. Rabbit, kangaroo, cat, squirrel

2. Spider, cockroach, housefly, butterfly

3. Snake, earthworm, silkworm, honeybee

4. Penguin, peacock, emu, ostrich

5. Ginger, onion, potato, cabbage

6. Sunflower, mustard, groundnut, neem

IV. Mark the directions on the map and answer these questions

5

1. How do directions help us?

2. Which is the northern most and southernmost state of India?

a) _____

b) _____



V. Choose the correct answer

2

1. A medicinal plant.(rose, tulsi, teak, jute)

2. An organ which helps to digest food (lungs, eyes, liver, stomach)

3. A flower eaten as vegetable.(maize, cabbage , cauliflower, tomato)

4. A carnivorous animal. (eagle, camel, bear, horse)

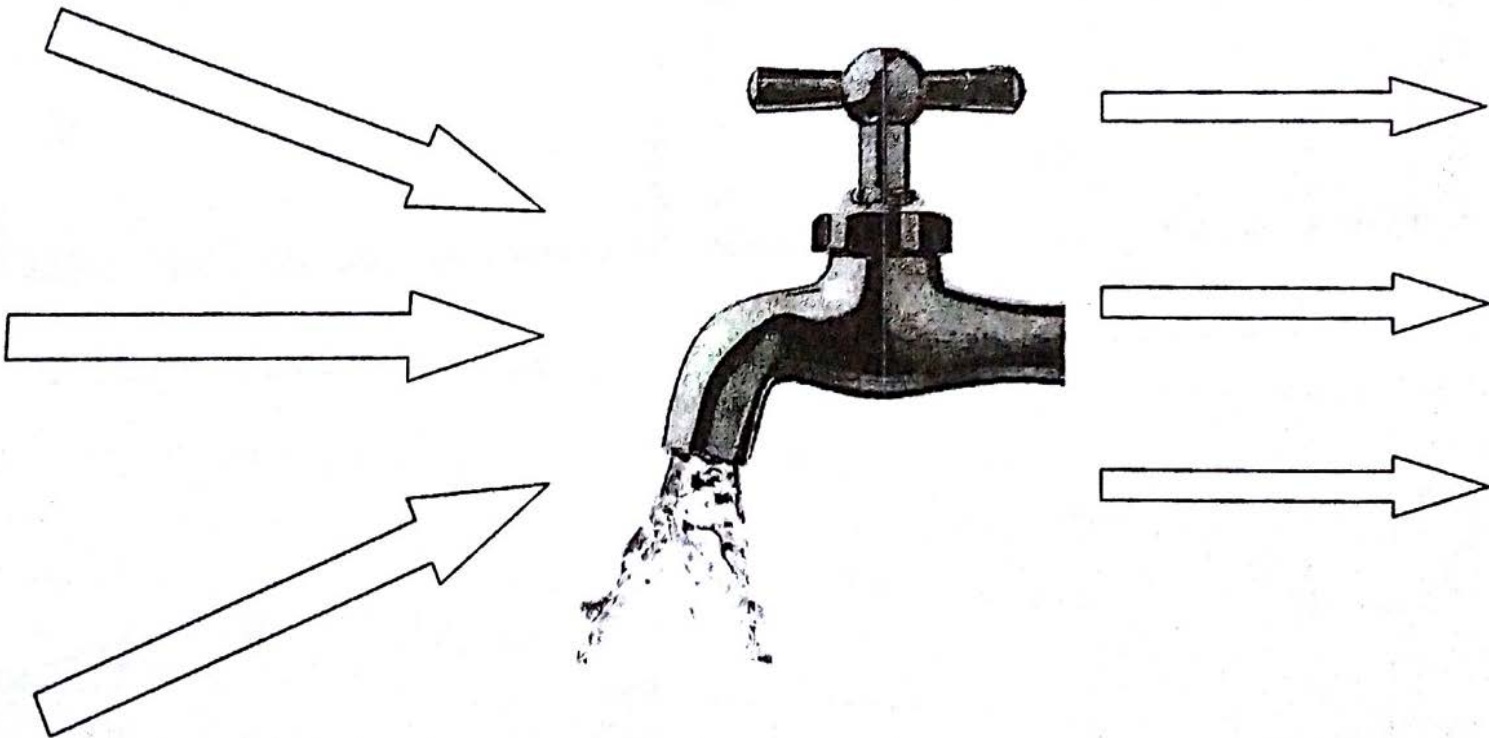
VI. Look at the picture and answer these questions.

3

1. How did water reach in your tap? (Write any two sources)
2. Water is precious. Why? (Write any three reasons)

Reasons

Sources

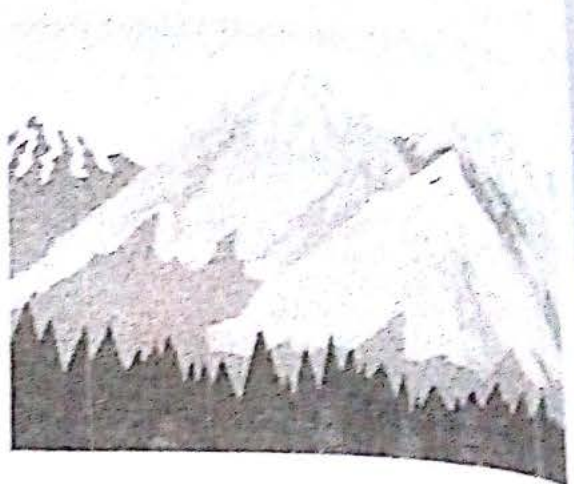


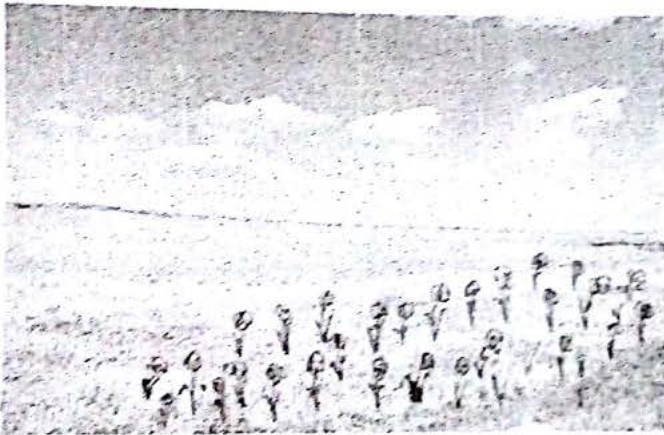
VII. Draw a root that we eat. Name it.

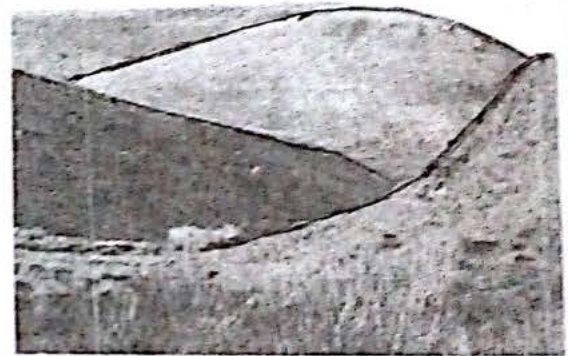
3

VIII. Identify the following land forms









IX. Answer the following questions

1. Write down one difference between

Herbivorous animal

Carnivorous animal

2. How much of the Earth's surface is covered with water?

3. What are omnivorous animals? Give two examples.

4. How are rivers formed?

5. Trees are very important to us. Why? (Write any three reasons)

6. How do rivers and lakes get polluted?

7. How do scavengers help us?

8. Why do people go to hill stations in summer?