

CLASS:VI

MATHEMATICS

MARKS:80

TIME: 1½ hrs

I. Fill in the blanks:-

(10)

- An angle of measure 360° is called _____.
- $\frac{48}{10}$ can be written in decimal form as _____.
- A fraction with numerator less than denominator is called _____.
- $\frac{3}{8} = \frac{\quad}{32}$
- 181° is a _____ angle.
- 4905 mm = _____ m
- The place value of 6 in the number 42.568 is _____.
- If three or more points lie on the same straight line, then the points are called _____ points.
- $12 + \frac{52}{100} = \underline{\hspace{2cm}}$
- The antecedent in the ratio 18:29 is _____.

II. Match the following:-

(4)

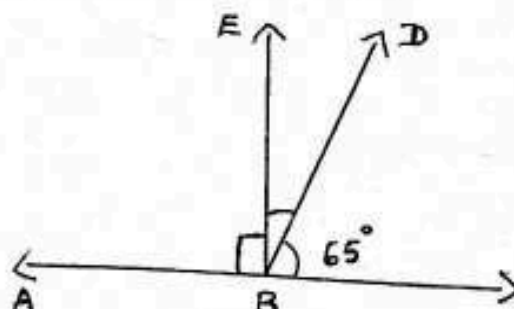
Column AColumn B

- | | |
|---------------------------------|---------------------|
| 1. A definite position | Parallel lines |
| 2. Two lines meet at 90° | Line Segment |
| 3. Two lines never meet | A point |
| 4. A part of a line | Perpendicular lines |

Questions 1-10 carries 3 marks each.

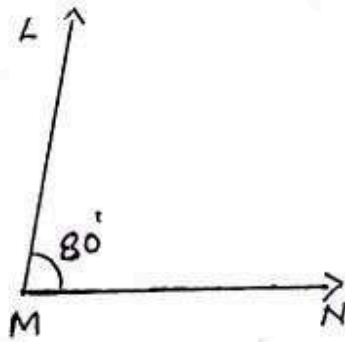
- Subtract 4.98 from 49.05
- Convert into improper fraction: (a) $15\frac{3}{11}$ (b) $9\frac{8}{15}$
- Arrange in ascending order:- 43.213 ; 43.123 ; 43.231 ; 43.132

- From the figure find (1) $\angle EBD$
(2) $\angle EBA$

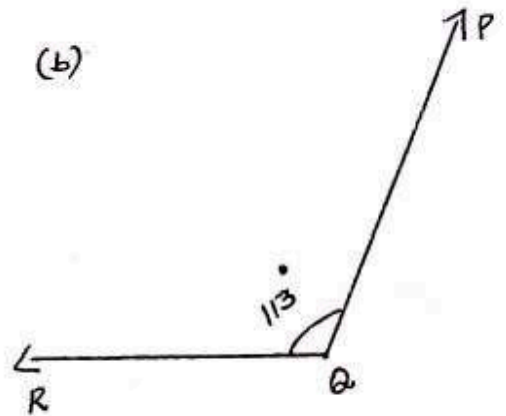


5. Convert the decimal 3.05 into a fraction in the lowest term.
6. Find the supplementary angle of (1) 139°
(2) 63°
7. Find the sum of :- 114.05 ; 23.16 ; 126.12
8. Find the ratio of 150 g to 2 kg
9. Expand 483.29 in the fractional form.
10. Write the vertex, arms of the angles and identify the type of the angle.

(a)



(b)



Questions 11-14 carries 4 marks each.

11. Arrange in descending order: $\frac{1}{3}$, $\frac{3}{4}$, $\frac{5}{12}$
12. Find the missing term: $x : 6 :: 26 : 39$
13. There were 180 members in a committee. In a meeting $\frac{3}{5}$ of them were present. How many members were present? How many were absent.
14. The sides of a triangle are in the ratio 2 : 3 : 4. If its perimeter is 54cm, find the lengths of the sides of the triangle.
15. Thomas travelled to his company 20.7 km by train and 2055m by bus. Find the total distance travelled. (in metres).
16. Simplify: $74.8 - 68.79 + 11.43$ [5]
17. The cost of 20 books is Rs. 140. Find the cost of 70 books. [5]
18. Simplify: $\frac{7}{8} + \frac{3}{4} - \frac{9}{16}$ [5]

[5]