

Mar Thoma Residential School-Tiruvalla

Second Terminal Examination 2017-18

Class: VI

Biology

Marks:80

Time:1 1/2 hrs

I Name the following

(5)

1. The malfunctioning of the body or the mind.
2. The arrangement of veins in the leaf.
3. A number of roots arising in a cluster below the stem.
4. The outer most whorl in a flower.
5. The pigment which give green colour to the leaves.

II. Fill in the blanks

(5)

1. The baby plant present in a seed is also called.....
2. Seeds of lady's finger are dispersed by
3. Deficiency of Vitamin A causes a disease called.....
4.and.....are required for the smooth functioning of the nervous system.

III Write true or false. If it is false correct the statement either changing first or last word

(5)

1. The ovary after fertilization forms the seed.
2. The process in which plant lose extra water in the form of water vapour through the stomata is called respiration.
3. Calcium is required for the formation of blood.
4. Stilt roots are found in banyan trees.
5. Carbohydrates are body-building nutrients.

IV Give any one point of difference between the following

(5)

1. Mesocarp and Endocarp
2. Apical bud and Axillary bud
3. Self-pollination and Cross pollination
4. Radicle and Plumule
5. Root system and Shoot system

V Give reason

(6)

1. Boiling water makes it safe for drinking
2. Seeds need to be dispersed far and wide.
3. Leaves have tiny pores called stomata
4. Fibre rich vegetables should be included in our diet.
5. Growing children should eat lots of proteins.
6. The leaves are generally flat and broad.

VI Define the following terms

(5)

1. Balanced diet
2. Fertilization
3. Internode
4. Health
5. Sessile flower

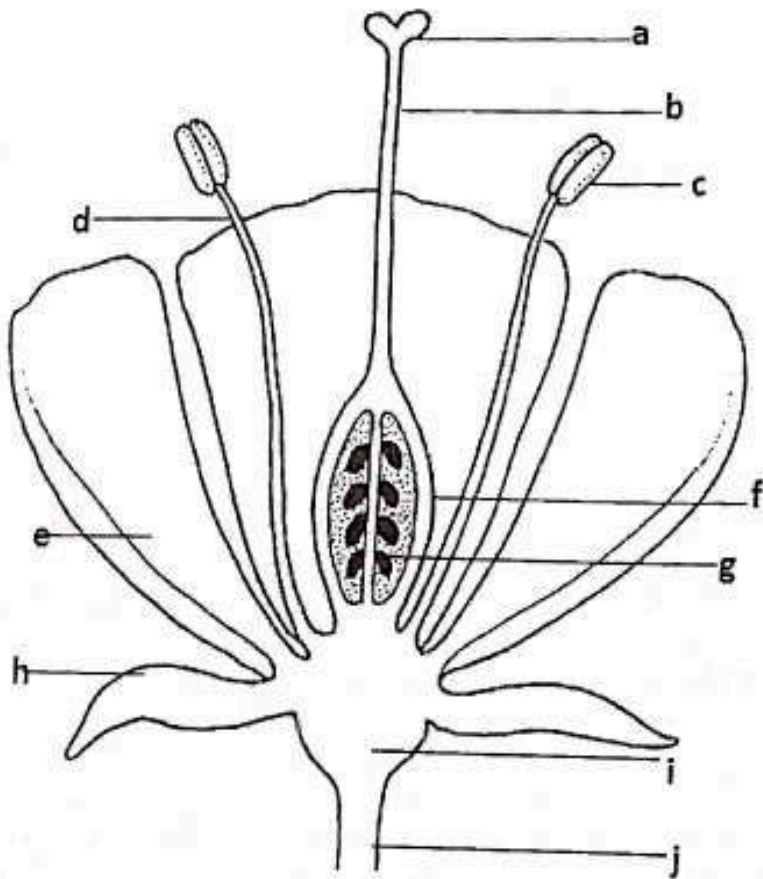
VII Match the following

(5)

A	B
Money plant	Haustoria
Screw pine	Stilt roots
Dodder	Climbing roots
Maize	Nitrogen fixing roots
Pea	Prop roots
	Breathing roots

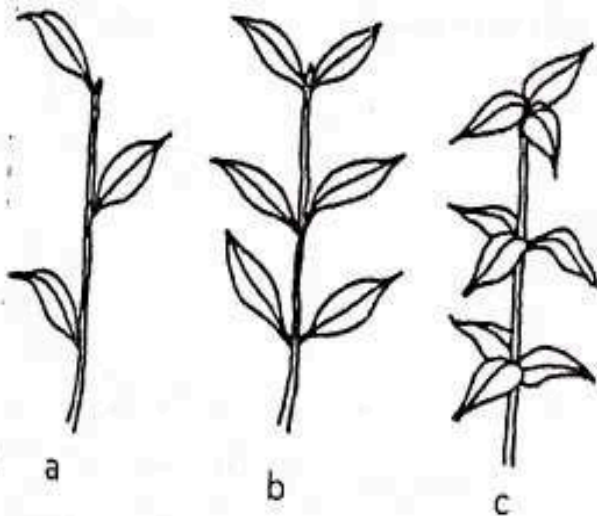
VIII. Given below is the structure of a flower

(7)



- Label the parts a to j
- What is a complete flower?
- Differentiate between bisexual and unisexual flowers.

IX. The picture given below shows the arrangement of leaves in a plant (21/2)



- Identify a to c
- Write a difference between (a) and (b)

X. Answer the following questions

(6)

1. Give the features of flowers pollinated by

- a. water
- b. insects
- c. wind

2. Why is water necessary for our body?

(3)

3. a. What is composting? Write any other two methods of waste disposal? **(3)**

b. Why is it necessary to dispose the garbage in a proper way?

4. What do you understand by the term oral hygiene? Give three healthy habits to maintain oral hygiene.

(4)

5. i. Why should we include vitamins in our diet?

(2)

ii. What are the sources of minerals?

6. Write the features of seeds dispersed by water

(2)

7. Write four ways by which you can take care of your eyes

(4)

8. Write three functions of fruit

(3)

9. a. What is the function of pollen tube?

(11/2)

b. What is the fate of sepals after fertilization?

10. Draw the labelled diagrams of

- i. Leaf
- ii. Carpel
- iii. Tap root

(6)
