

MAR THOMA RESIDENTIAL SCHOOL THIRUVALLA
SECOND TERMINAL EXAMINATION 2017-18

BIOLOGY

TIME: 2 hrs
MAX. MARKS: 80

STD: IX

Question 1

- a. Name the following** (10)
1. The principal heat regulating centre in the brain.
 2. The large hole seen at the back of the Cranium
 3. The part of the intestine which is always empty
 4. The mineral required for the formation of Haemoglobin
 5. A Vestigial Organ in our body
 6. A Modified sweat gland
 7. Pigments present in bile
 8. The storage form of Carbohydrates in animals
 9. The deficiency of this vitamin causes Beriberi
 10. The vitamin that can be synthesised in our body.
- b. Define the following** (5)
1. Malnutrition
 2. Deamination
 3. Incubation period
 4. Assimilation
 5. Inspiratory Reserve volume
- c. Differentiate between the following terms on the basis of what is given in bracket** (5)
1. Leucoderma and Albinism (Extent of occurrence)
 2. Residual volume and Vital capacity (Quantity of air)
 3. Vasodilation and Vasoconstriction (Definition)
 4. Adult teeth and Adolescent teeth (Dental formulae)
 5. Sporadic and Pandemic (Extent of occurrence)
- d. Give the location of the following** (5)
1. Arrector Muscle
 2. Glenoid Cavity
 3. Lacteals
 4. Ceruminous glands
 5. Melanin
- e. Give any one function of the following** (5)
1. Rectum
 2. Alveoli
 3. Diaphragm
 4. Stratum Corneum
 5. Memory Cells

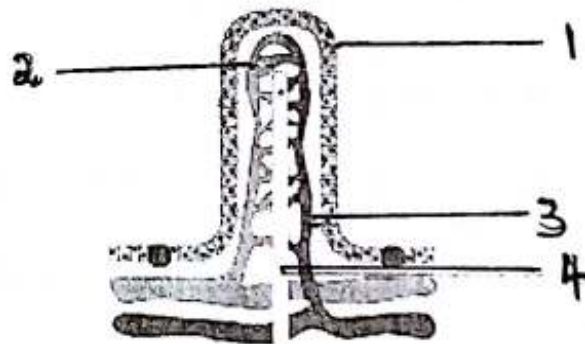
f. Given below is a table consisting of a set of items belonging to a common category. Complete the table by filling the category and the odd one in the blanks (10)

SET	Category	Odd one
1. Femur, Tibia, Fibula, Ulna		
2. Erepsin, Maltase, Lipase Steapsin		
3. Colon, Caecum, Illeum, Rectum		
4. Malaria, Chicken Pox, Dengue, Hepatitis, AIDS		
5. Dermis, Nail, Hair, Sweat glands		

SECTION -2 (40 MARKS)

Question 2

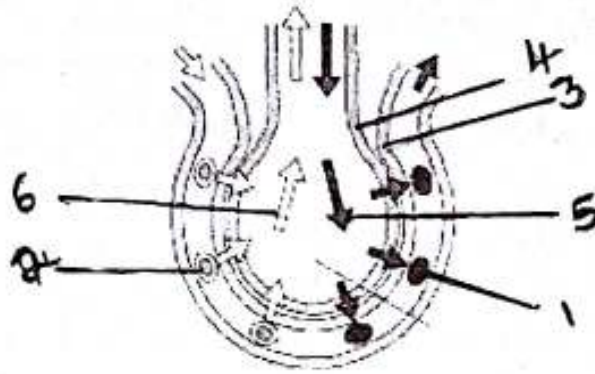
a. Given below is a certain structure of human body. Study it carefully and answer the questions that follow.



1. Identify the structure. Give its exact location (1)
 2. What is its function? (1)
 3. How is it adapted to perform the said function? (1)
 4. Label the parts numbered 1-4 (2)
- b. Briefly answer the following question (5)
1. What is the fate of fat in our body?
 2. What are antagonistic Muscles? Explain with the help of an example.
 3. What is hair? How does it provide a sensation of touch?
 4. What do you mean by oxygen debt?
 5. How is Carbondioxide transported to lungs after cellular respiration?

Question 3

a. Given below is a diagrammatic sketch of a part in Human Body. Carefully observe it and answer the questions that follow.



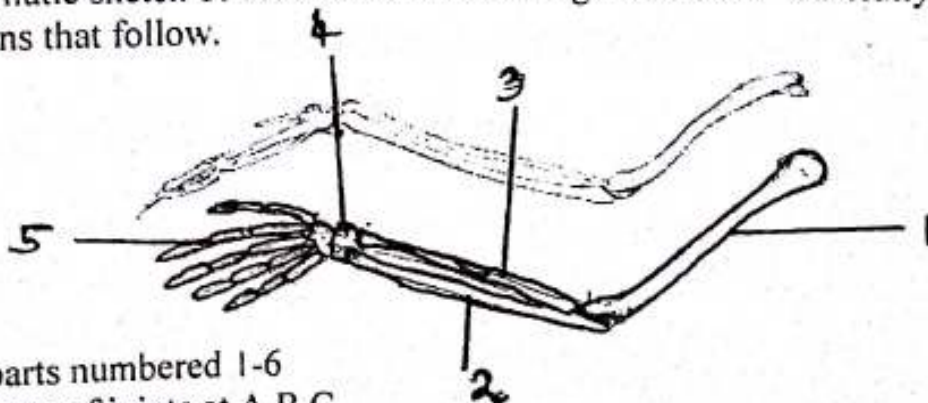
1. Label the parts 1-4 (2)
2. What is this process? Give the principle and this process (2)
3. What do arrows 5 and 6 indicate? (1)

b. Give reasons (5)

1. Bile is essential for digestion.
2. Every living room should get direct sunlight at least for few hours.
3. Gaseous exchange continues in lungs even after expiration.
4. Thalassemia patients are at the risk of getting AIDS.
5. Kerosene prevents Mosquito from breeding on stagnant water.

Question 4

a. The diagrammatic sketch of the skeleton of arm is given below. Carefully observe it and answer the questions that follow. (7)



1. Label the parts numbered 1-6
2. Name the type of joints at A, B, C
3. Name the corresponding bones found in the leg numbered 1-5

b. Write short notes on (3)

1. Heat Stroke
2. Ribs
3. Piloerection

Question 5

a.

1. Draw a neatly labelled diagram showing internal structure of a teeth. (3)
2. Explain the terms Thecodont and Heterodont (2)

b. **Answer the following.**

1. List out any 3 functions of WHO. Where is its HQ? (2)
2. Why do we say that a growing child need more protien? (2)
3. What makes a blind perosn read braille characters? (1)